

The Swedish Hospital Story



It began with just \$10,000 — and a dream. Dr. Nils Johanson, a surgeon and Swedish immigrant, saw the need for a first-rate nonprofit hospital in the thriving port town of Seattle. He convinced 10 of his fellow Swedish-Americans to buy \$1,000 bonds. And in 1910, Swedish Hospital opened in a renovated apartment building, with just 24 beds.

Over the years, Swedish has grown to meet the needs of the community. In 1912, the Swedish Board of Trustees voted to acquire a nearby 40-bed private hospital that was nearing completion when its founder unexpectedly died. The new facility, located at Summit and Columbia, would become the cornerstone of the current Swedish/First Hill Campus.

Just four years later, to meet increasing demand, the hospital's first patient wing was added. During the next 50 years, every decade saw the addition of new buildings and enhanced facilities. Even during the Great Depression, Swedish persevered in its commitment to serve its community. In 1932, it opened the first cancer-care center west of the Mississippi. Today, the Swedish Cancer Institute treats more people for more types of cancer than any other provider in the Pacific Northwest.

By 1975, with the addition of professional office buildings and the area's first independent day-surgery program, Swedish had grown to become a major medical center. In 1980, Doctors Hospital and Seattle General Hospital closed, merging with Swedish.

Ballard Community Hospital became a valuable part of the Swedish system in 1992. Now known as Swedish Medical Center/Ballard Campus, it continues to play a vital role in the North Seattle community. Providence Seattle Medical Center, founded by the Sisters of Providence, also added important expertise and resources when it joined the Swedish system in 2000. The campus was renamed Swedish Medical Center/Cherry Hill Campus earlier this year. In 2005, Swedish expanded its footprint into the Eastside, opening an emergency room and specialty center in Issaquah.

As Swedish has evolved, so has its scope of services. But throughout the years, one thing has not changed. Swedish retains the vision of its founders: to be the best nonprofit medical facility in the region.



Swedish Hospital Founders Recognition Dinner and Tribute

21 April 2007

Swedish Cultural Center

Seattle, Washington

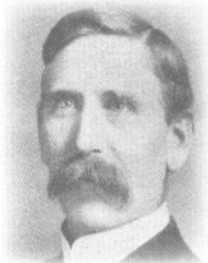


Swedish Cultural Center

Our Honorees



Nils A. Johanson, M.D., founder and visionary



Otto Godfrey Chealander



Andrew Chilberg



Gustav A. Edelsvard



P. A. Hallberg



John Kalberg



Emil Lovegren



Israel Nelson



N. J. Nyquist



J. A. Soderberg



H. E. Turner

Menu

Dinner presented by Kaspar's

First Course

Midnight Sun Smorgasbord Plate:
House Smoked Pike on Marinated Red Beets
Deviled Egg with Prawns and Dill
Venison Terrine with Sweet and Sour Cucumbers
Pickled Herring with Sweet Mustard Sauce

Second Course

Pan Seared Wild King Salmon
with Dill Aquavit Sauce and Forest Mushrooms
Janssons Frestelse
Green Spring Vegetable Medley
House Baked Breads and Spreads

Dessert

Lingonberry Trio:
Lingonberry Sorbet
White Chocolate Lingonberry Mousse
Lingonberry Tiramisu

Coffee, Tea
Wine and Champagne
No-host cocktails

MASTER OF CEREMONIES

*Lars Jonsson
Swedish Consul, Seattle*

Program

"A Message from Sweden"

*Tomas Rosander
Swedish Consul General, Western Region*

Introduction of the Founders

Five of the eleven Swedish Hospital founders

*Marianne Forssblad
Executive Director, Nordic Heritage Museum*

A Tribute to His Grandfather

*Ned Turner
Grandson of founder Henry Edward Turner*

Introduction of the Founders

The remaining six Swedish Hospital founders

*Marianne Forssblad
Executive Director, Nordic Heritage Museum*

"Swedish Medical Center Today"

*Rodney F. Hochman, M.D.
President and CEO, Swedish Medical Center*

Closing Remarks

*Brandon Benson
Board President, Swedish Cultural Center*

Musical selections performed by:

*Catherine Hessler, Mezzo-Soprano
Lisa Bergman, Pianist*

How many Swedes does it take
to open a hospital?



Otto Godfrey Chealander



Andrew Chilberg



Gustav A. Edelsvard



P. A. Hallberg



John Kalberg

Eleven dedicated ones.

The Swedish Cultural Center invites you to join them in honoring
the founders of Swedish Hospital at a special centennial

Recognition Dinner and Tribute

Featuring special presentations by:

Swedish Consul General of Los Angeles - Tomas Rosander

Executive Director of the Nordic Heritage Museum - Marianne Forssblad

Chief Executive Officer of Swedish Medical Center - Rodney Hochman, M.D.

Musical performances by:

Swedish opera singer - Marie Birve

Pianist - Lisa Bergman

Saturday, 21 April 2007

6:00 p.m. - Social Hour (no-host cocktails)

6:45 p.m. - Dinner (presented by Kaspar's)

Swedish Cultural Center

1920 Dexter Avenue North, Seattle

Tickets are \$100 per person and space is limited.

Please respond by 13 April by way of the enclosed card or by calling 206-283-1090.

*Nils A. Johanson, M.D.,
founder and visionary*



Emil Lovegren

Israel Nelson

N. J. Nyquist

J. A. Soderberg

H. E. Turner

